

## THE LANDSCAPE...

LOCATE SOLAR was utilised to analyse the potential for rooftop solar across the county of Kent.

Kent comprises of 12 local authority districts and Medway Unitary Authority

There are 648,393 households in Kent (2021 Census)

Known as 'the garden of England', minimum of 70% of the land in each of the districts is undeveloped

Utilising our solar suitability database from LOCATE SOLAR, we were able to analyse the potential for rooftop solar across the county. Of the 924,965 buildings analysed (residential and commercial buildings), we found:

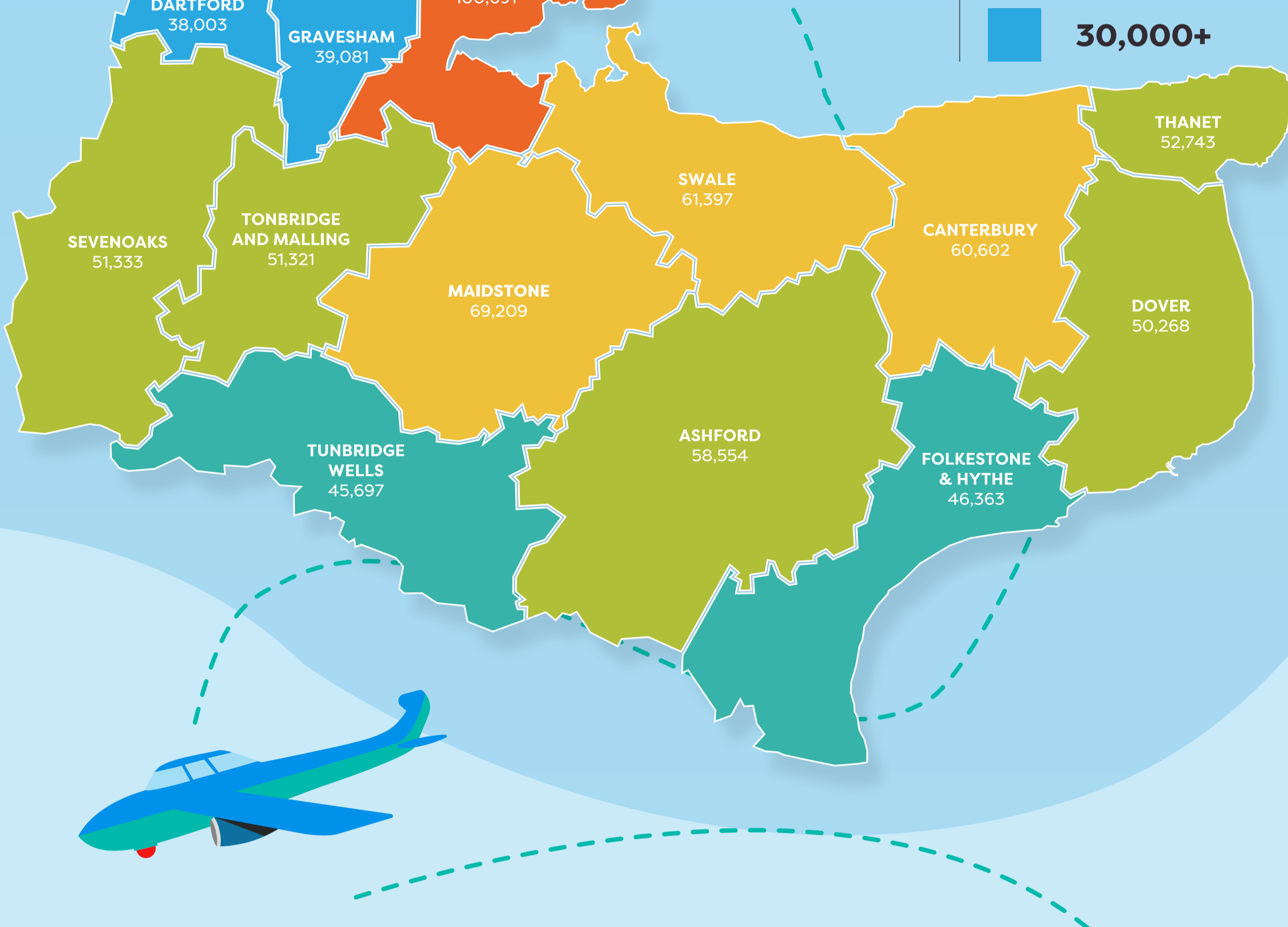
## THE FINDINGS...

KENT COUNTY COUNCIL

### AREA OF FOCUS:

725,487 buildings were suitable for rooftop solar panels

- 100,000+
- 60,000+
- 50,000+
- 40,000+
- 30,000+



### THE RESULTS:

This equated to 24.7km<sup>2</sup> of sloping roof space suitable for solar panels and offered a total potential annual yield of at least 4,549 gWh

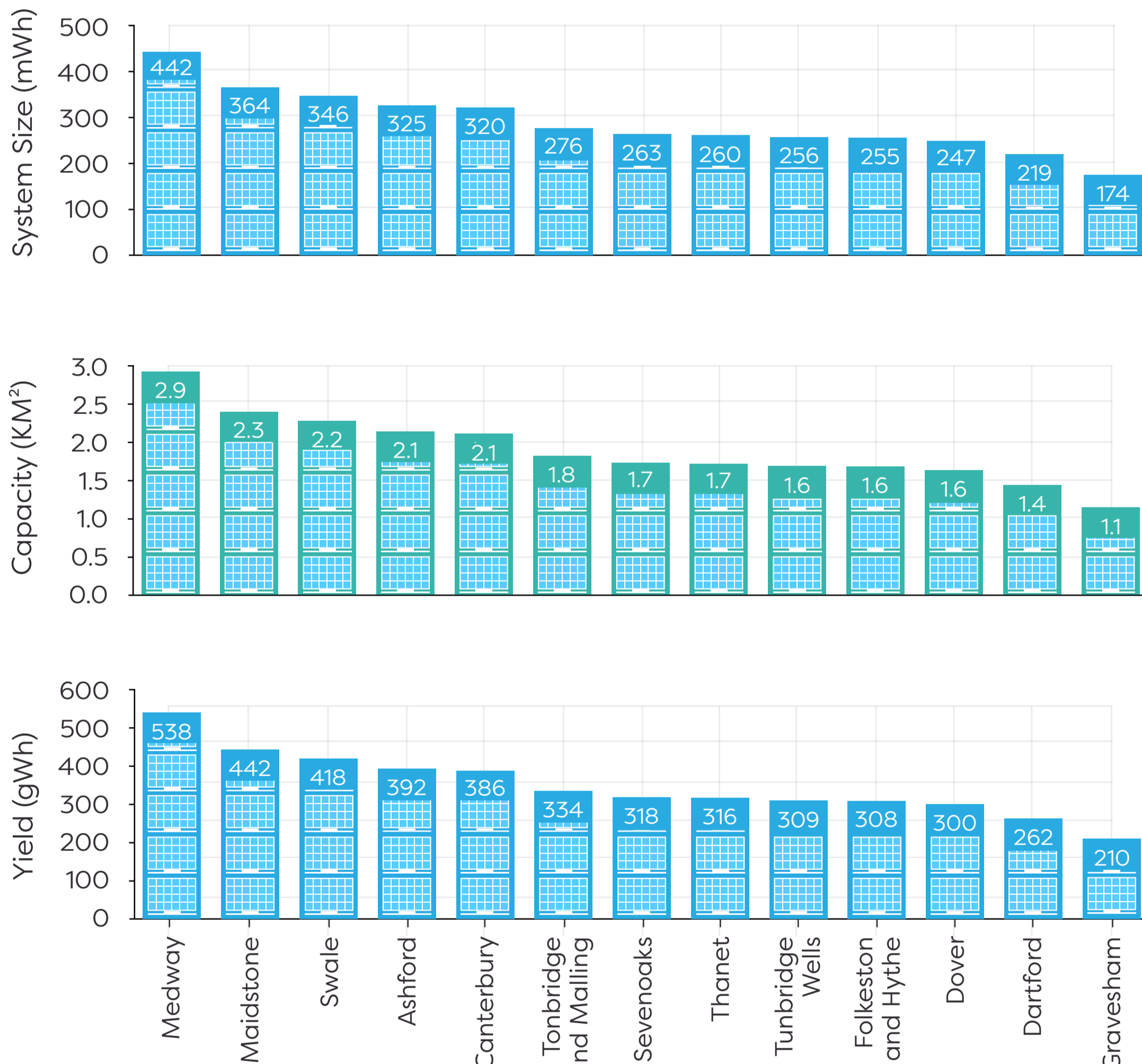


## BREAKDOWN OF OUR DATA

### WHOLE COUNTY OF KENT:

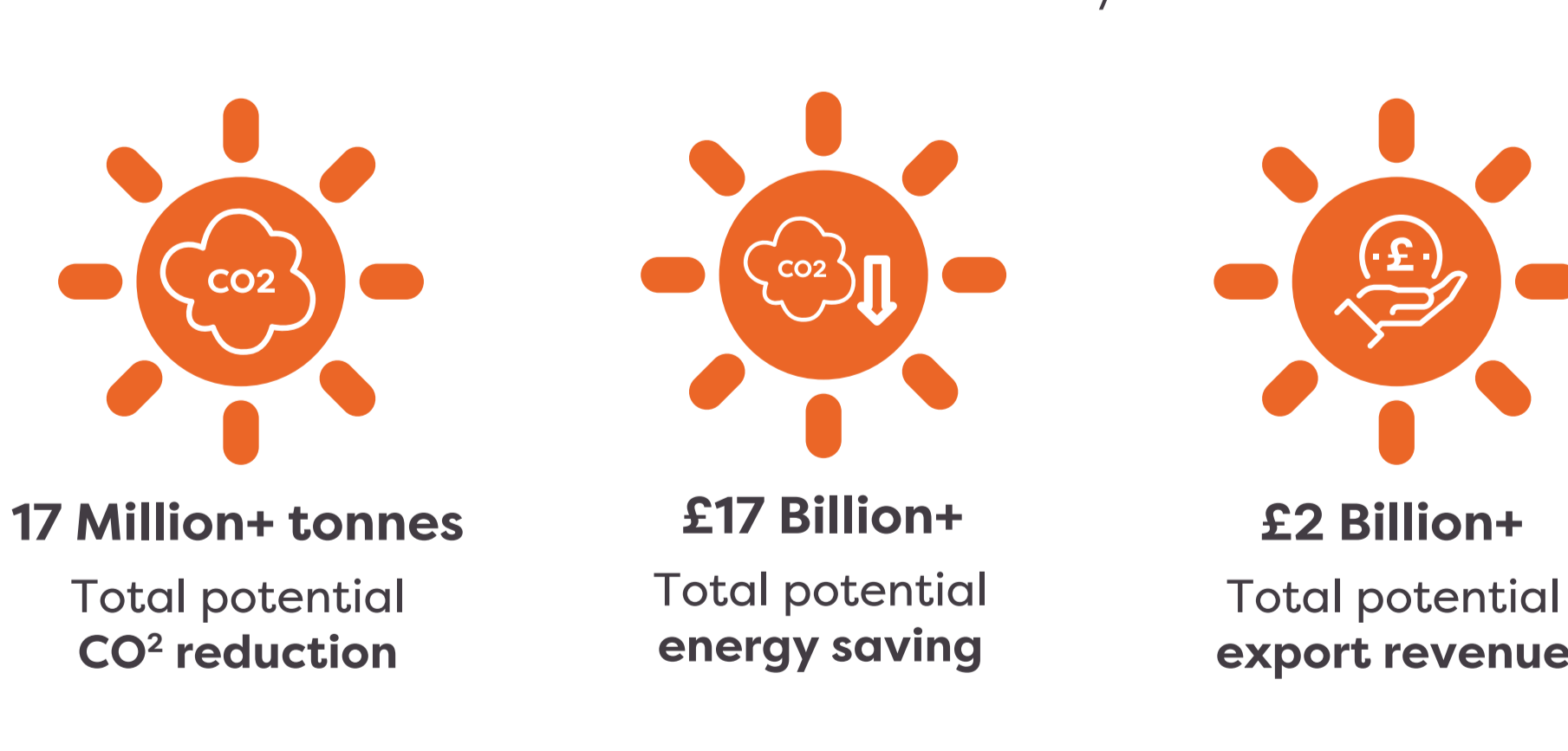
UPRN (Number of Unique Property Reference Number for Each Land or Property): <b>924,965</b>	Postcode (Number of Postcode Districts): <b>84</b>
Solar Suitable (Number of Solar Suitable Buildings): <b>725,487</b>	Solar Area (The Total Solar Area, in sq m): <b>24,735,461.50</b>
Panel Quantity (Total Number of Solar Panels): <b>15,055,577</b>	System Cost (Total in £): <b>5,645,841,375.00</b>
Yield (The Total Amount of Energy Produced from Solar Panels, in Kwh): <b>4,549,995,432.87</b>	Expected Revenue 1 Year (Total in £): <b>79,624,919.76</b>
Expected Revenue 20 Years (Total in £): <b>2,161,448,532.13</b>	Electric Savings 1 Year (Total in £): <b>636,999,361.42</b>
Electric Savings 20 Years (Total in £): <b>17,116,411,369.31</b>	CO <sub>2</sub> Savings 1 Year (Total in t): <b>879,882.06</b>
CO <sub>2</sub> Savings 20 Years (Total in t): <b>17,597,561.58</b>	

### BREAKDOWN BY AREA:



### SOLAR BENEFITS:

Potential financial and environmental benefits from solar installations in Kent over 20 years



### FINANCIAL VALUE:

