

1. STARTING TO EXPAND

At the start of 2024, Luton had **45 public chargepoints**, laying the ground work for future expansion.



2. SECURING FUNDING

Luton Borough Council **secured £1.3 million** from the Local Electric Vehicle Infrastructure (LEVI) fund to support its chargepoint expansion plan.



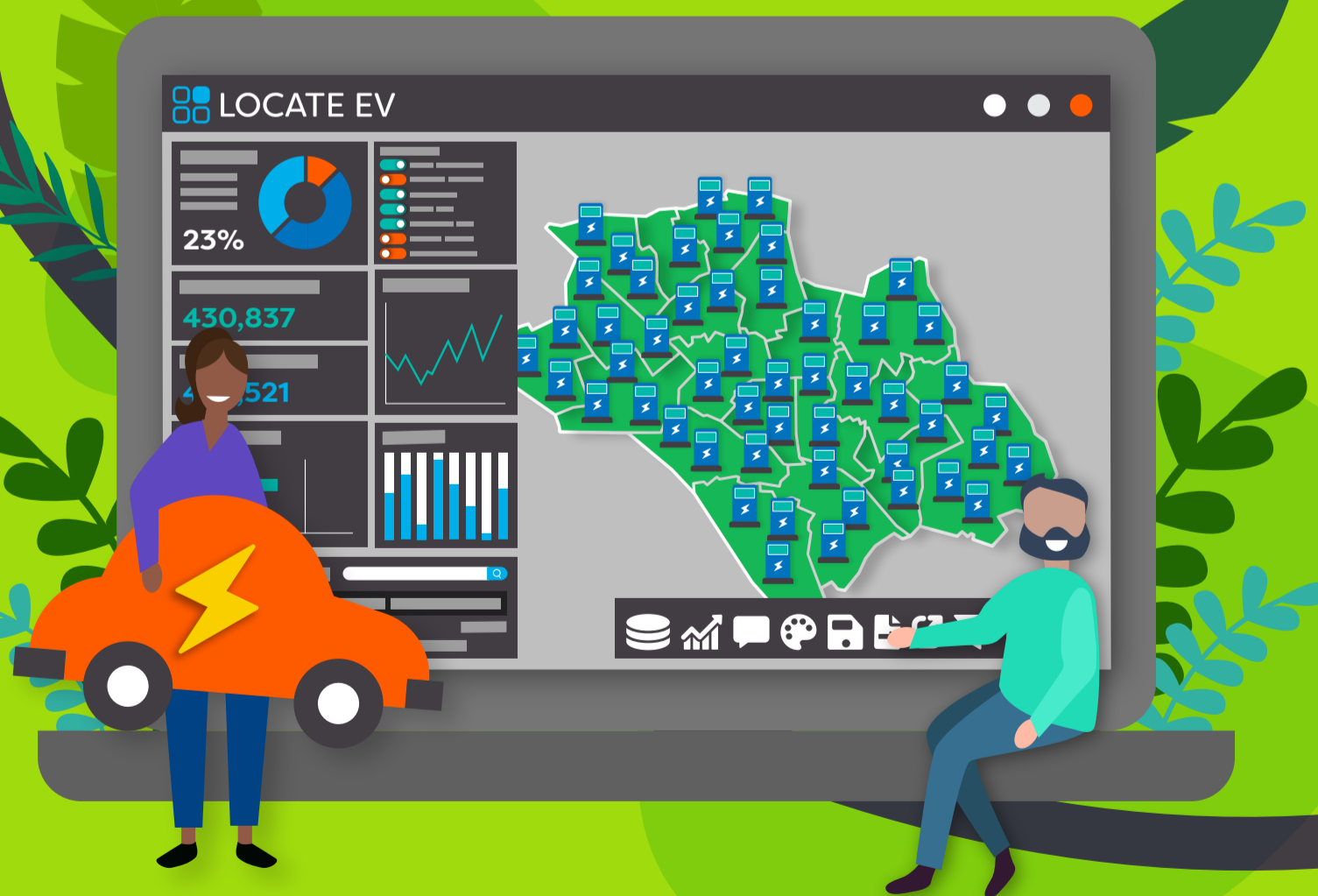
3. DATA-DRIVEN DECISIONS

The Council adopted LOCATE EV to ensure the **optimal locations** and **guide strategic decision-making**.



4. PLANNED EXPANSION

Using LOCATE EV, **292 chargepoint locations** have already been identified.



5. SERVING LOCAL COMMUNITIES

These new charge points will provide access for **over 25,000 residential properties** that rely on public charging.



6. FUTURE GROWTH

An additional **157 charge points** are planned for installation by the **end of 2025**, driving Luton towards a greener, more sustainable future.

